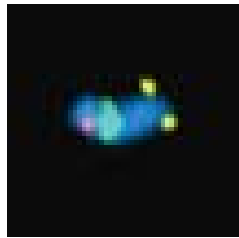
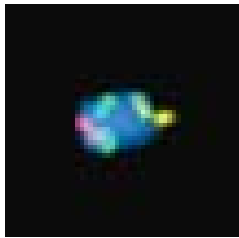
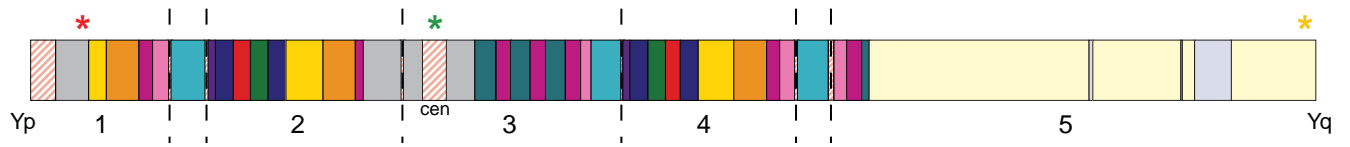


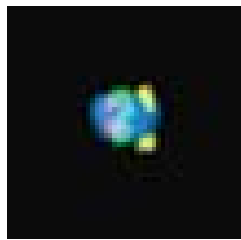
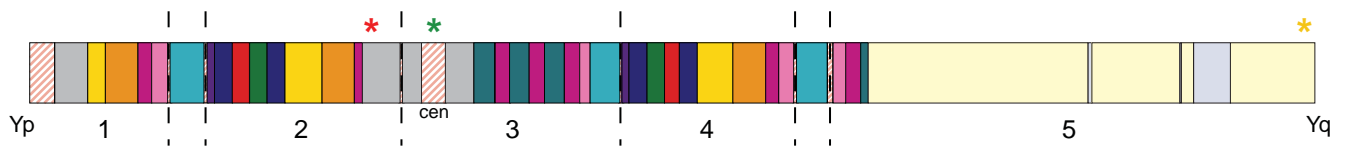
### Supplementary Figure 3

a Contig 1 is on short arm - probes: CH1251-6881E11 (red), CH251-541M1 (green), CH1251-4421N16 (yellow)



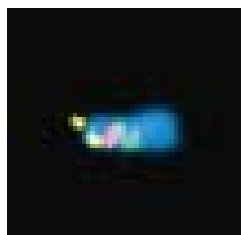
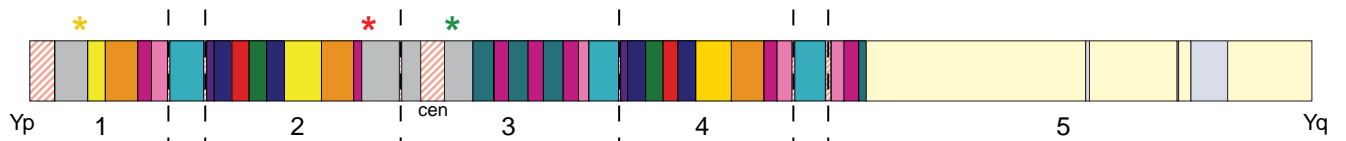
RGY	18X
R/GY	17X

b Contig 2 is on short arm - probes: CH1251-4029M17 (red), CH251-541M1 (green), CH1251-4421N16 (yellow).



RGY	5X
R/GY	14X

c Contig 1 is more distal than contig 2 - CH1251-6687A05 (yellow), CH1251-4029M17 (red), CH1251-6076G10 (green)



YRG	24X
YR/G	16X
YGR	2X
Y/GR	2X