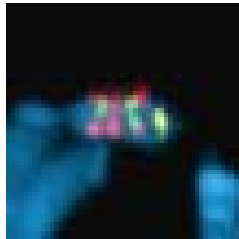
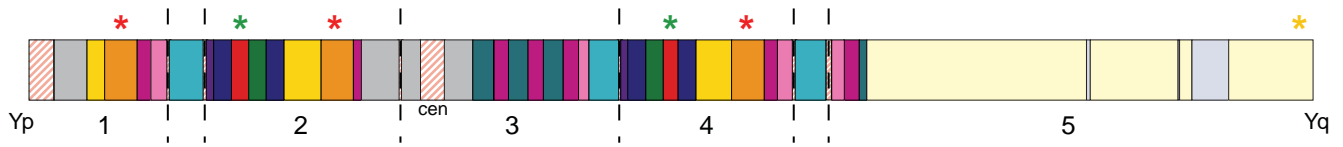


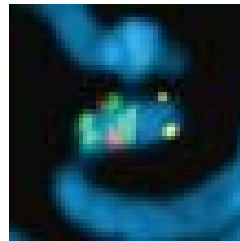
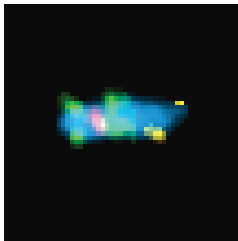
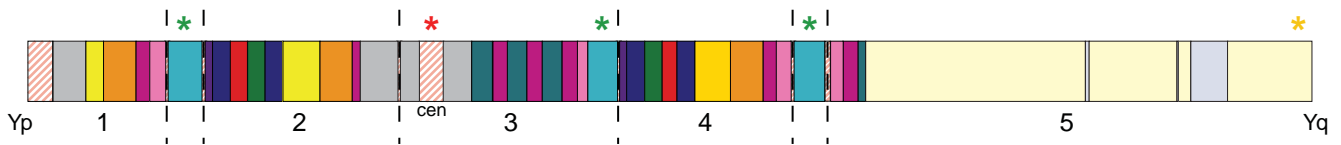
### Supplementary Figure 3

g Orientation of contigs 2 and 4 - CH251-387H09 (red), 18E8 (green), CH1251-4221N16 (yellow)



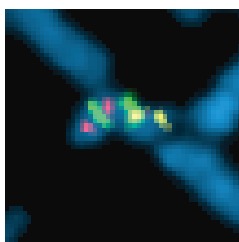
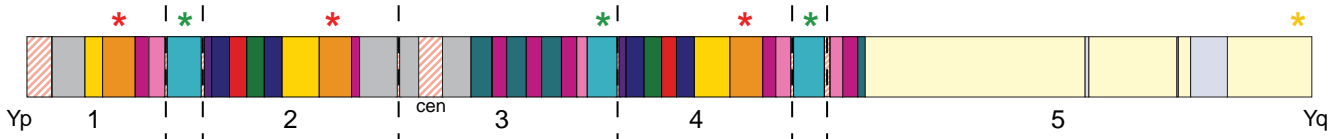
RGRGRY	14X
RGR??Y	18X
??GRY	13X

h Placement of aqua palindromes on short and long arm - CH1251-6076G10 (red), CH1251-6332E22 (green), CH1251-4221N16 (yellow)



GRGY	24X
------	-----

i Placement of aqua palindrome on short arm between contigs 1 and 2 - CH251-387H09 (red), CH1251-4694J22 (green), CH1251-4221N16 (yellow)



RGRGRY	6X
RGR??Y	9X
RGRRGY	4X
??RGRY	2X