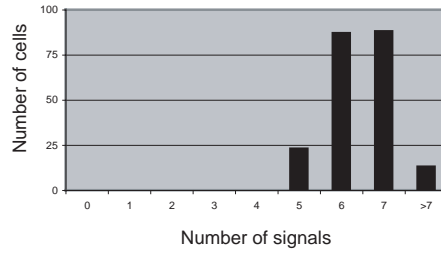
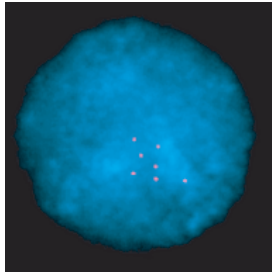
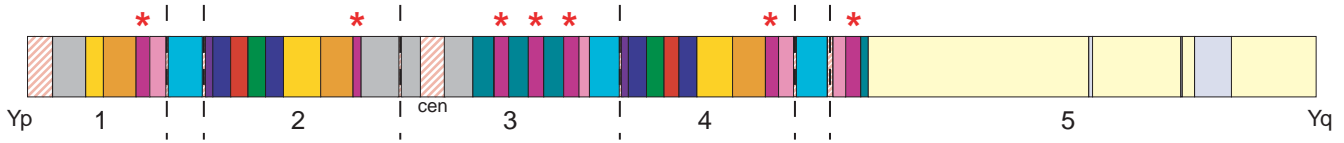
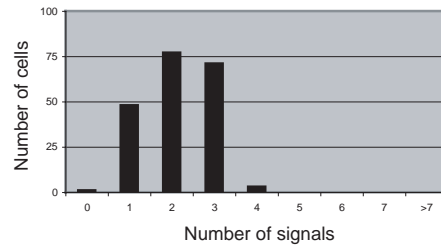
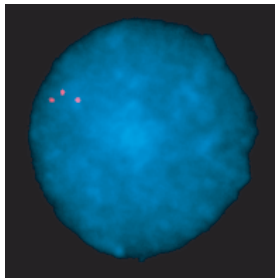
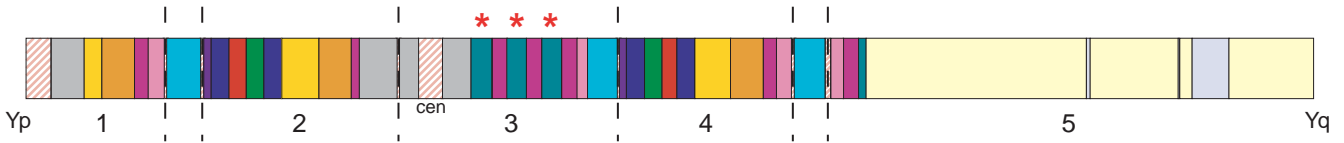


a At least 7 copies of violet palindrome loop - probe: CH1251-7227O21



b At least 3 copies of teal palindrome loop - probe: CH1251-4428N05



Supplementary Figure 5a,b Confirmation of copy numbers of amplicons by interphase FISH analysis. For all experiments, nuclei are in G1 and >100 nuclei were counted. Distribution of counts is shown.